

॥ ॐ साईराम ॥



**Sai Raj Group™**  
*Building Lifestyles*



A Project By  
**VIKRANT**  
CONSTRUCTIONS  
*Your dream our reality*



SAI  
**VIKRANT**  
HEIGHTS

The exquisite square of  
**LUXURY** and **LOCATION**



Lokmat Thane Gaurav  
2022



Awards Received by our Company

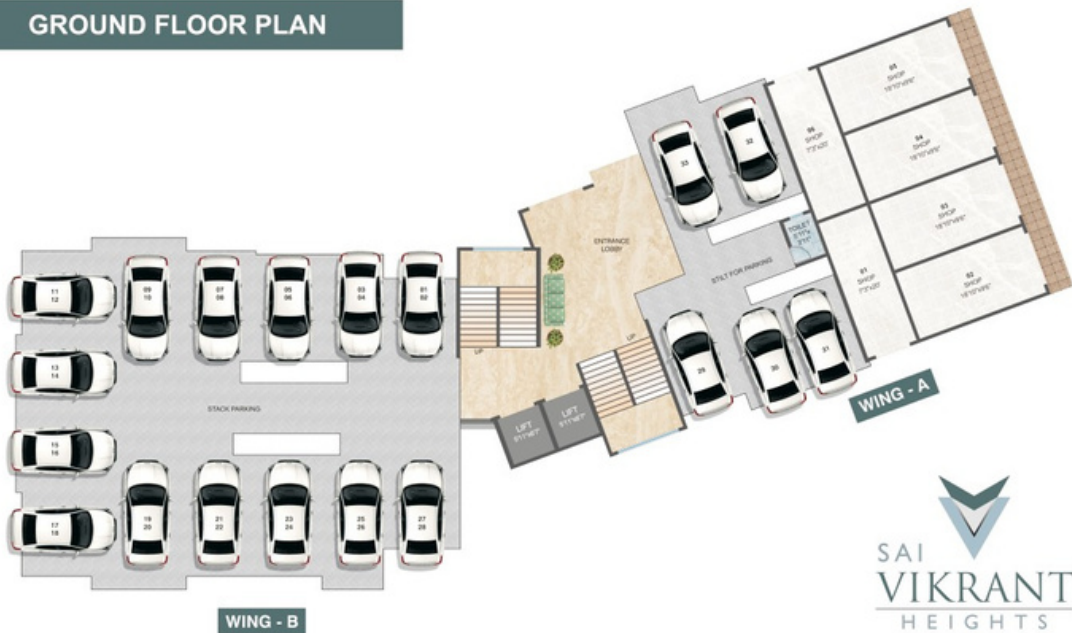


Times Leading Icons  
2022

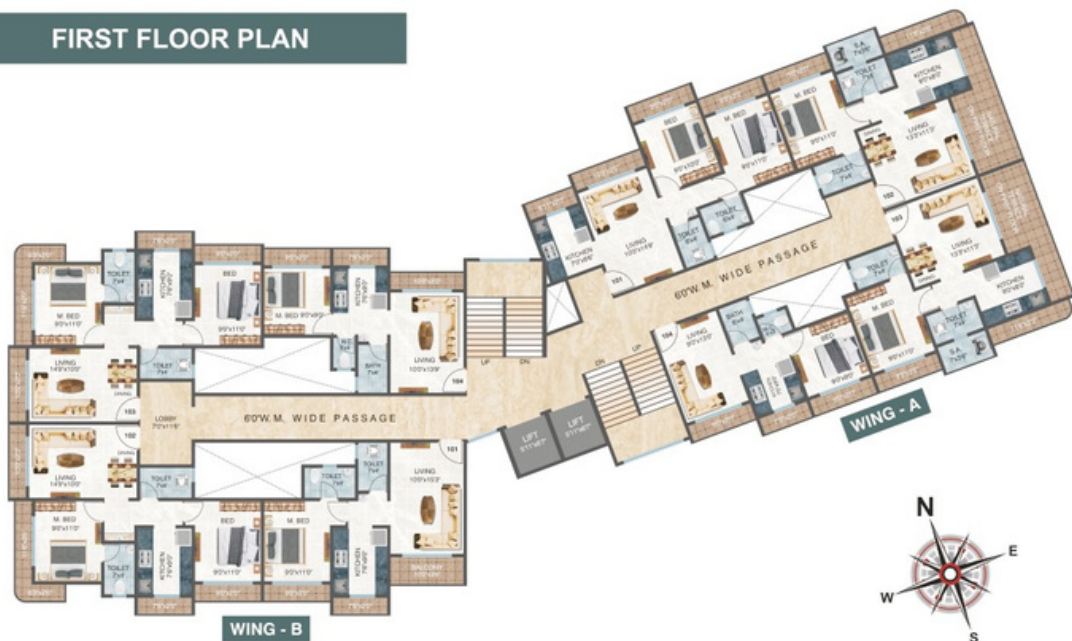


Discover Luxury in Lifestyle

## GROUND FLOOR PLAN



## FIRST FLOOR PLAN



## SECOND FLOOR PLAN

The second floor plan is divided into two main wings, Wing B and Wing A, separated by a central corridor and stairs.

**Wing B (Left):** This wing features a symmetrical layout with a central 60'W.M. wide passage. Each side of the passage contains a living area, a kitchen, a bedroom, and a bathroom. The layout is mirrored across the central passage.

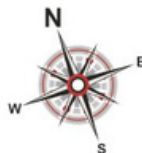
**Wing A (Right):** This wing is an asymmetrical layout with a 60'W.M. wide passage. It includes living areas, kitchens, bedrooms, and bathrooms. The layout is more complex, with rooms arranged around the central passage and a central staircase.

**Central Corridor and Stairs:** A central corridor connects the two wings, featuring a staircase and a lift shaft.

**Room Details:** The plan includes detailed furniture layouts for each room, including beds, sofas, tables, and kitchen fixtures. Room numbers are indicated throughout the plan.

**Compass Rose:** A compass rose is located at the bottom center of the plan, indicating North (N), South (S), East (E), and West (W).

**SAI VIKRANT Logo:** The logo for SAI VIKRANT is located at the bottom right of the plan.



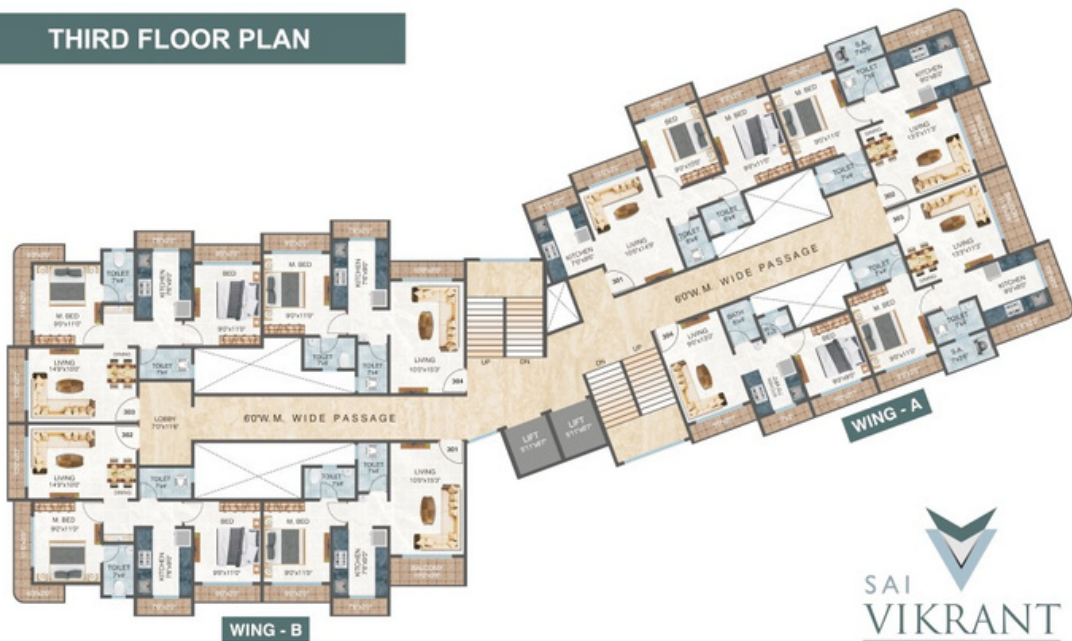
SAI  
VIKRANT  
HEIGHTS



An iconic Experience...  
Let's feel it



## THIRD FLOOR PLAN

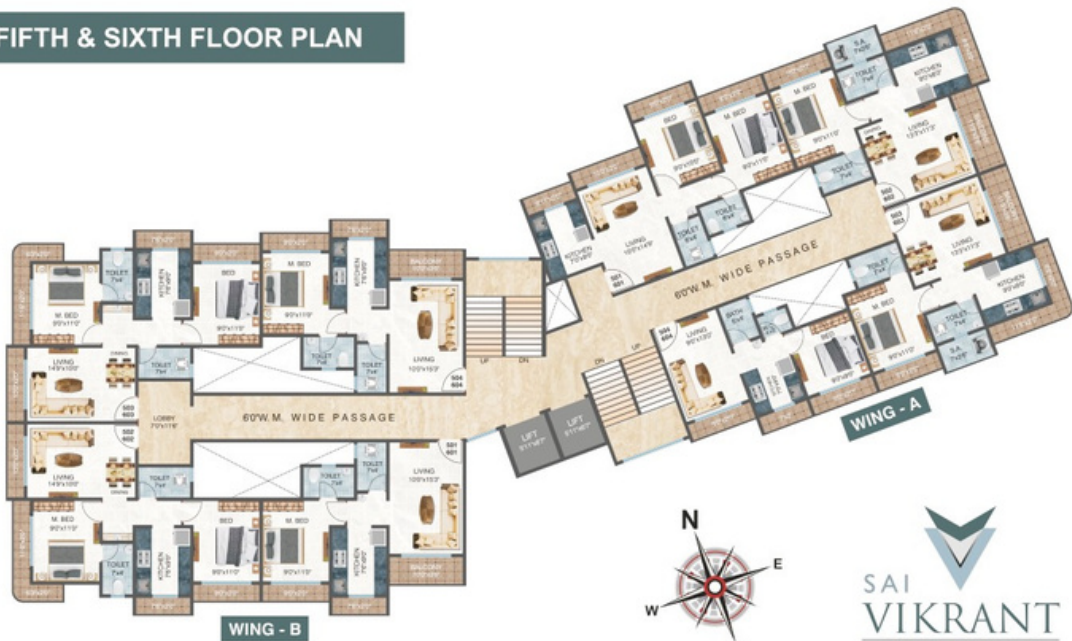


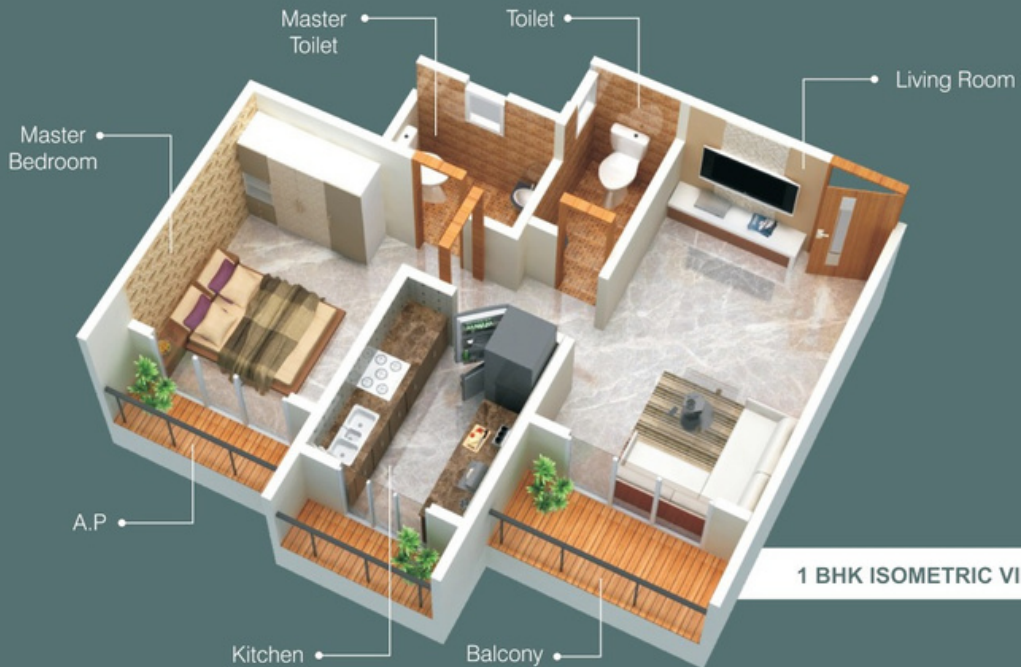


## FOURTH FLOOR PLAN

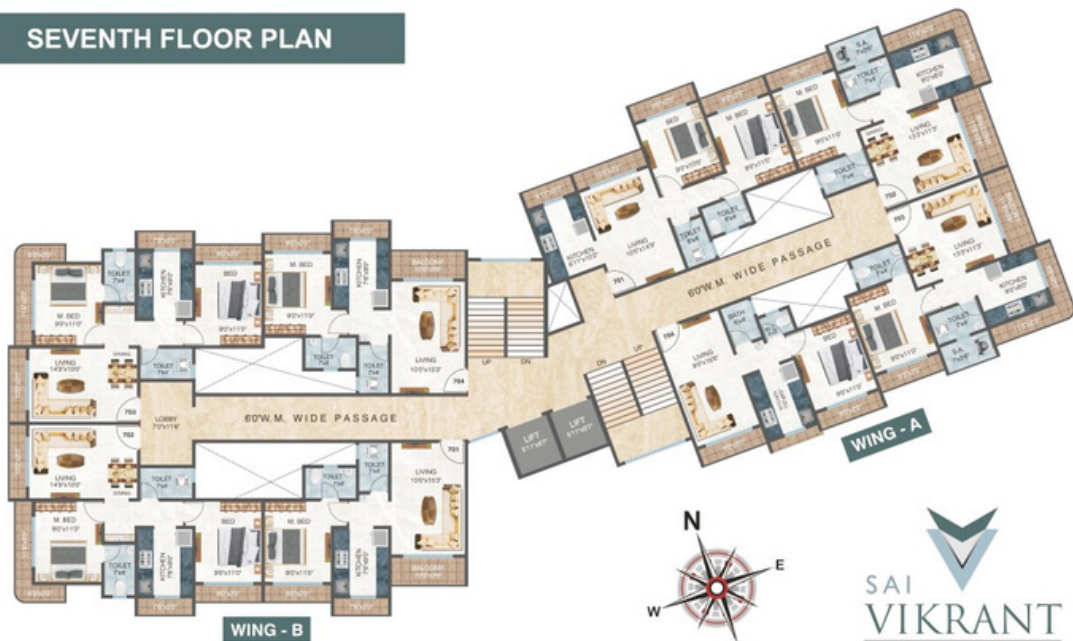


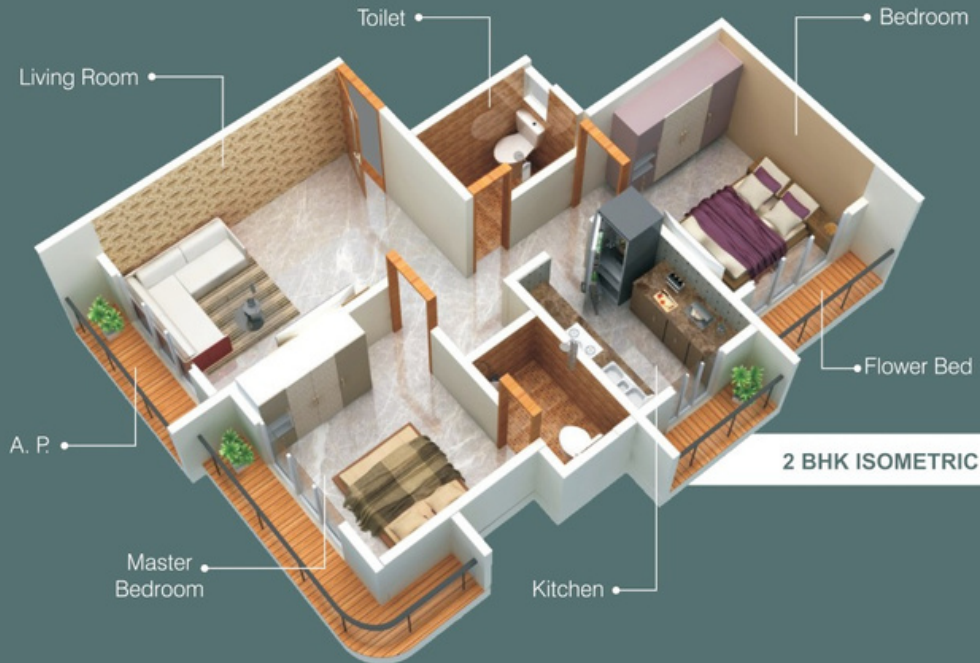
## FIFTH & SIXTH FLOOR PLAN





## SEVENTH FLOOR PLAN

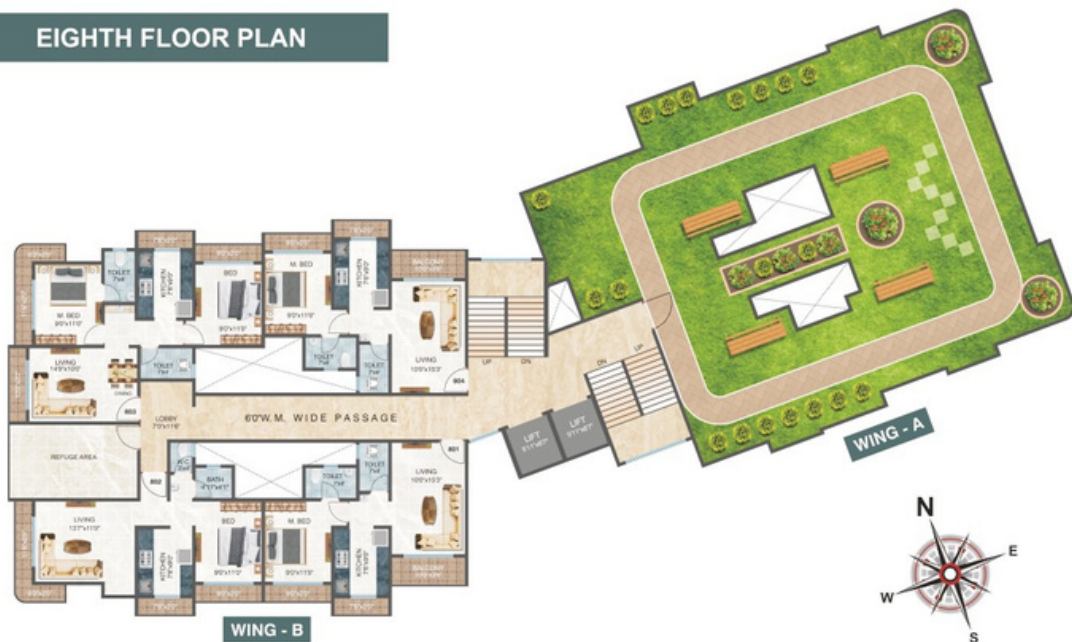




**2 BHK ISOMETRIC VIEW**



## EIGHTH FLOOR PLAN





## Feel on TOP of the WORLD

- Roof Top Walk Way
- Roof Top Sitting Area
- Artificial Garden



G+25 Storied (1 Podium Tower)  
Kalyan - East



G+25 Storied (3 Podium Tower)  
G+17 (1 Podium Tower)  
Kalyan - East



G+15 Storied (1 Tower)  
Kalyan - East



## Amenities

- **LIVING ROOM**
  - 2'X2' Vitrified Tiles flooring
  - Cable TV Point
- **BED ROOM**
  - Vitrified Tiles flooring
  - Cable TV connection in Master Bedroom
  - AC Point in Bedroom
- **KITCHEN**
  - Black Granite Top kitchen platform with Stainless Steel Sink Mixer, Refrigerator & RO Points Provided
- **PLUMBING**
  - Internal Branded Concealed fittings and fixtures
  - Provide Commode with jet Spray in Master Toilet

#### ● DOORS & WINDOWS

- Main Door : Teakwood Frame Flush Door with Decorative Laminate Sheet, Safety Lock & Beautiful Fittings.
- Bedrooms : Flush Door with Beautiful Fittings.
- Toilets Door : Water Proof FRP Doors
- Windows : French Window with One Way Glass.

#### ● BATHROOM

- Full Height Tiles in Bath & WC
- Ceramic Tiles flooring
- Washbasin
- equivalents make fittings and premium sanitary ware Designer dado up to 7'

#### ● STRUCTURE

- Earth-quake resistant
- RCC framed structure

#### ● PAINTING

- External : Acrylic emulsion
- Internal : Good Quality Plastic Paint with Full Putty

#### ● ELECTRICAL

- All electrical wiring is concealed and of equivalents make and modular switches
- Sufficient power outlet and light points provided

## Experience the joy of **LIVING**



### Project Highlights

- Just 1.5 KM from Kalyan Station
- Stack Parking
- Door Camera System
- Branded Lift with Power Backup
- POP False Ceiling in Living & Bed
- Water Tank
- CCTV Surveillance
- Fire Fighting System
- Solar System



Completed - Ongoing Projects



**SAI GALAXY**  
Kalyan - East



**VAISHANVI PARK**  
Phase II, Kalyan - East



**SAI KISAN**  
Badlapur - East



**SAI SARASWATI**  
Badlapur - West



**SAI ANANDI**  
Kalyan - East



**SAI DYANYOG**  
Badlapur - East



**SAI PRASAD**  
Badlapur - East



**SAI RAJ APARTMENT**  
Badlapur - East





**SAI ALTEEZA**  
Kalyan - East



**TISAI HEIGHTS**  
Kalyan - East



Site : S.No 51, H. No 12/A/18, Near Hanuman Nagar Auto Stand,  
Hanuman Nagar, Katemanivali, Kalyan (E) 421 306.

**Ongoing Project** ■  
**Completed Project** ■  
**Upcoming Project** ■

॥ ॐ साईराम ॥

A Project By



**Sai Raj Group™**  
*Building Lifestyles*



A Project By  
**VIKRANT**  
CONSTRUCTIONS  
*Your dream our reality*

Office : Sai Galaxy, Shop No. 1 to 9, Behind Sai Baba Nagar,  
Near Gas Company, Katemanivali, Kalyan (E) 421 306.

Web : [www.sairaj-group.com](http://www.sairaj-group.com)

Email : [vikrantheights60@gmail.com](mailto:vikrantheights60@gmail.com) | [sairajgroup4002@gmail.com](mailto:sairajgroup4002@gmail.com)

---

**Toll Free No.: 911 210 4002**

• Architect •  
**Emerge Architect & Asso.**  
Kalyan

• RCC Consultant •  
**Atul Kudtarkar**  
Badlapur

• Legal Advisor •  
**Adv. Vasant Ghodvaliya**  
Kalyan

**Adv. Ganesh Gholap**



**Maha Rera Regd. No.**

All plans, Layout, Elevations, Drawings, Amenities are subject to approval of the respective authorities  
and will be changed if necessary. The discretion remains with the developers.